


Chlamydia / gonorrhoea dual PCR test

Information for you

 Follow us on Twitter @NHSaaa

 Find us on Facebook at www.facebook.com/nhsaaa

 Visit our website: www.nhsaaa.net

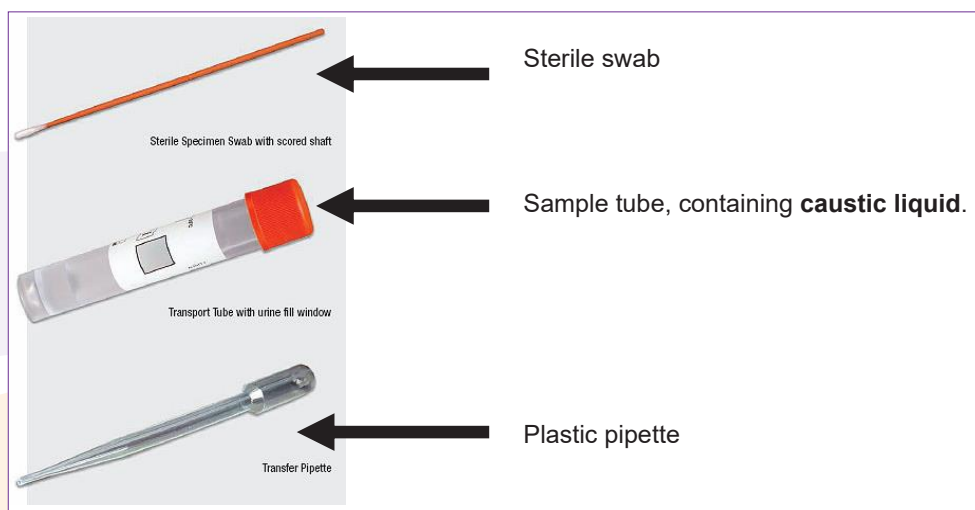
 All our publications are available in other formats



The kit can be used to collect either a vaginal swab (women) or a urine sample (men). You can use this kit to collect a sample that will be tested for both chlamydia and gonorrhoea.

The kit contains;

- Sample tube (containing 1.2ml of caustic liquid)
- An individually packaged sterile swab
- A plastic pipette
- Sample label
- Transport container (clear plastic with white lining)
- Yellow form (says 'microbiology' on it)
- Grey plastic, freepost envelope



The caustic liquid is harmful.

Don't let it touch your skin.

Don't drink it.

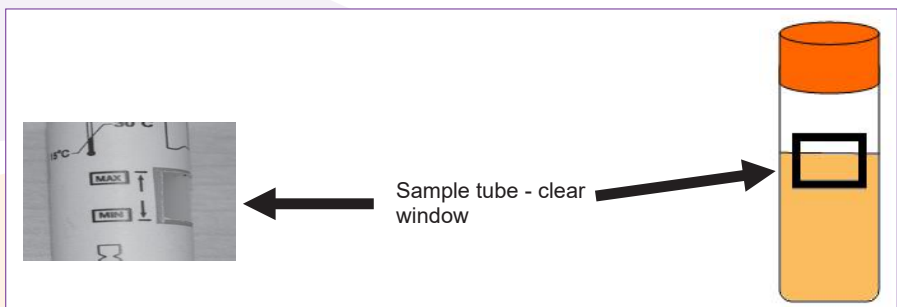
If it spills onto your skin wash it off immediately with plenty of water.

If you swallow it seek medical attention immediately.

Male sampling

Men need to give a urine sample.

1. Discard the swab; you don't need it.
2. Do not pass urine for at least one hour before giving your sample.
3. Using a clean cup (**not supplied in the kit**), collect the **first** 20 to 30 ml of urine (about two table spoons) from the first part of the stream.
4. Carefully open the sample tube, taking care not to spill the caustic liquid in it.
5. Use the plastic pipette to transfer **urine** from the cup into the sample tube. Slightly more than one full squeeze of the pipette bulb may be needed. Take care not to splash the caustic liquid.



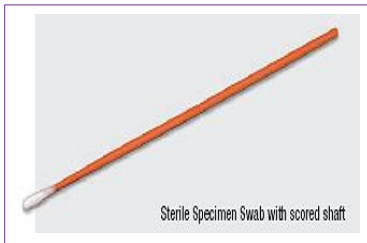
6. Please ensure the liquid level in the sample tube falls within the clear fill window of the sample tube label. **DO NOT UNDERFILL OR OVERFILL.** If under filled or overfilled, the sample cannot be tested and a repeat sample will be needed.
7. Recap the sample tube carefully. Make sure the cap is on tightly.
8. Put **today's date** on the sample tube label.
9. Fit the sample tube into the transport container, ensure it is securely closed.
10. At the bottom right of the yellow form, put **today's date**.
11. Put the transport container, along with the sample tube, and the yellow form into the grey plastic envelope.
12. Remove the clear plastic strip from the top of the envelope and **carefully seal** the envelope closed.
13. Pop the kit in the post box.

Female sampling

Women need to give a swab test.

Urine samples aren't accurate for gonorrhoea in women; swabs give a more reliable result. **Do not send** urine sample if you are a woman.

The caustic liquid is harmful. Don't let it touch your skin. Don't drink it. If it spills onto your skin wash it off immediately with plenty of water. If you swallow it seek medical attention immediately.

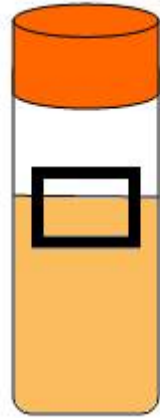


1. Discard the plastic pipette; you don't need it.
2. Remove the swab from the wrapper, taking care not to touch the white tip or lay it down on any surface.
3. Insert the white tip of the swab about two inches (5 cm) into the opening of your vagina.
4. Gently rotate the swab for 15 to 30 seconds against the sides of your vagina.

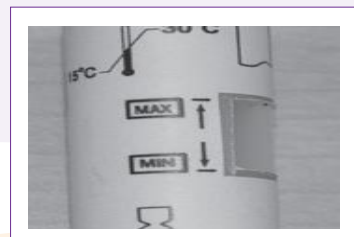
5. Withdraw the swab carefully from your vagina.
6. Hold the sample tube upright and carefully open the tube, taking care not to spill the caustic liquid in it.
7. Insert the swab, **white tip first**, into the sample tube.
8. There is a faintly scored line around the orange stick. Hold the stick firmly with the score mark against the top of the tube; bend it until it breaks off. Use care to avoid spillage of the caustic liquid.
9. Recap the sample tube carefully. Make sure the cap is on tightly.
10. Put **today's date** on the sample tube label.
11. Fit the sample tube into the transport container, ensure it is securely closed.
12. At the bottom right of the yellow form, **put today's date**.
13. Put the transport container, along with the sample tube, and the yellow form into the grey plastic envelope.
14. Remove the clear plastic strip from the top of the envelope and **carefully seal** the envelope closed.
15. Pop the kit in the post box.

Pharmacist information

1. Discuss method of collection with the client, urine sampling for males and low vaginal swab for females.
2. Advise the client about the caustic nature of the buffer liquid and the precautions to take. For example, avoid spillage and do not swallow it, do not put the swab in it prior to inserting the swab in the vagina.
3. For males: advise the client to make sure the sample bottle is not over or under filled and that the sample bottle is properly sealed.
4. For females: advise on avoiding contaminating the swab, how to break the swab, putting it in the sample vial white tip first, and avoid spilling the liquid.
5. Advise the client on how and where to put the date that the sample was taken on both the sample tube and the yellow form.
6. Advise client on how to pack the sample bottle within the transport container and how to seal the envelope properly.
7. Discuss how the client would like to be informed of the test results.



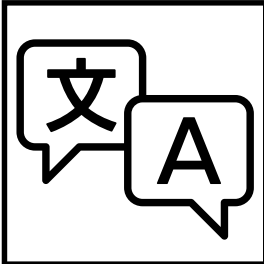
8. Discuss treatment options for both chlamydia and gonorrhoea infection, including treating partners.
 9. Using the label provided in the kit, fill in the patients name and date of birth.
 10. Put this label on the sample tube; take care not to obscure the fill window on the transport tube.
 11. Fill in the microbiology form with the client's name and date of birth and ensure only the pharmacy address is added to the form.
- Tick box if client is pregnant.
 - Tick box if client has received antibiotics within the last six weeks.
 - Ensure the correct test is requested (CHL/GC PCR).
 - Specimen type (urine or swab).
 - Specimen site (urethra or vagina).
 - The test being offered is a dual PCR test for both Chlamydia and N. gonorrhoea. Stand-alone requests for Chlamydia or N. gonorrhoea PCR will not be processed



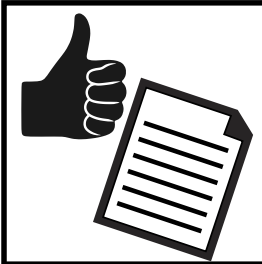
Notes:

A series of 15 horizontal dotted lines for writing notes.

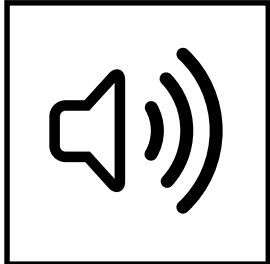
We are happy to consider requests for this publication in other languages or formats such as large print.



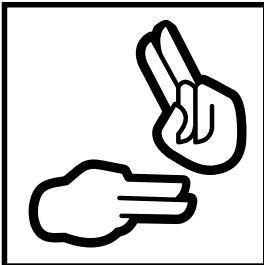
Translations



Easy to read



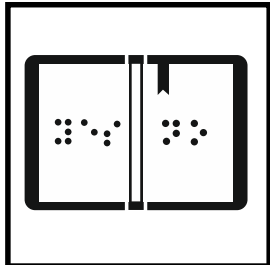
Audio



BSL



Large print



Braille

 **Call: 01563 825856**

 **Email: pil@aapct.scot.nhs.uk**



Tell us what you think...

If you would like to comment on any issued raised by this document, please complete this form and return it to our Feedback and Complaints team: PO Box 13, Eglinton House, Ailsa Hospital, Dalmellington Road, Ayr KA6 6AB.

Alternatively, you can call free on **0800 169 1441** or email **complaintsteam@aapct.scot.nhs.uk**

Name

Address

Comment